

## Specifications

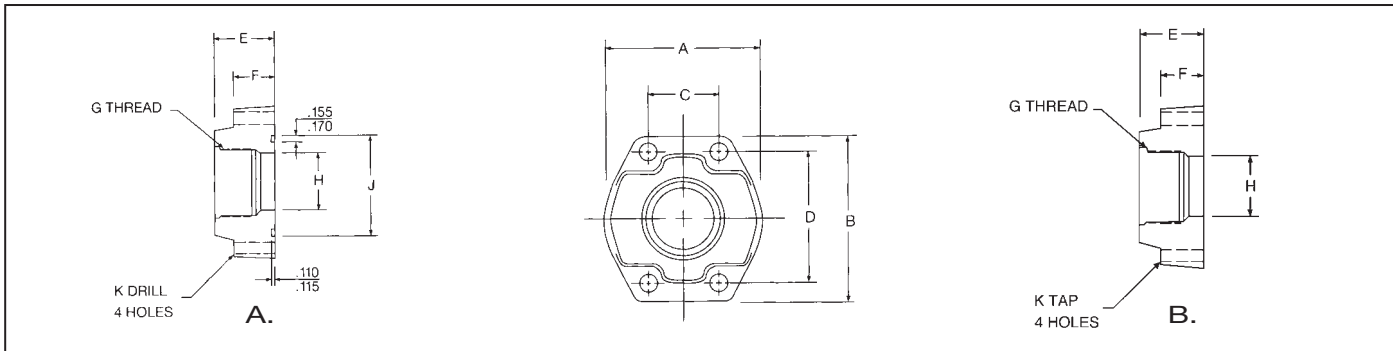
- Carbon Steel Forging
- 3000 PSI (200 bar) SAE Code 61

## Options

- NPT or SAE Thread
- Standard and Companion Flanges
- Reducing Options Available.



## Dimensions / Ordering Information



### Code 61 NPTF Thread

Part No. O-Ring Fig. A	Part No. Flat Face Fig. B	Port Size	Pad Size	A		B		C		D		E		F		G		H		J NPTF		K		L UNC-2B		Mounting Hardware	
				mm	in	mm	in	mm	in	mm	in	mm	in	mm	in	mm	in	mm	in	mm	in	mm	in	mm	in	O-Ring	SHCS
SP43-8-8	SP104-8-8	.50	.50	46	1.81	54	2.13	17	.688	38	1.500	36	1.42	16	.63	25	1.000	13	.502	1/2-14		9	.344	5/16-18		210	5/16-18X1.25
SP43-12-12	SP104-12-12	.75	.75	50	1.97	65	2.56	22	.875	48	1.875	36	1.42	18	.71	32	1.250	19	.752	3/4-14		10	.406	3/8-16		214	3/8-16X1.50
SP43-16-16	SP104-16-16	1.00	1.00	55	2.17	70	2.75	26	1.031	52	2.062	38	1.50	18	.71	40	1.560	25	1.002	1-11/2		10	.406	3/8-16		219	3/8-16X1.50
SP43-20-20	SP104-20-20	1.25	1.25	68	2.68	79	3.12	30	1.188	59	2.312	41	1.61	21	.83	44	1.750	32	1.252	1 1/2-11 1/2		12	.469	7/16-14		222	7/16-14X1.75
SP43-24-24	SP104-24-24	1.50	1.50	78	3.07	93	3.66	36	1.406	70	2.750	45	1.77	25	.98	54	2.115	38	1.502	1 1/2-11 1/2		13	.531	1/2-13		225	1/2-13X1.75
SP43-32-32	SP104-32-32	2.00	2.00	90	3.54	102	4.00	43	1.688	78	3.062	45	1.77	25	.98	63	2.490	51	2.002	2-11 1/2		13	.531	1/2-13		228	1/2-13X1.75
SP43-40-40	SP104-40-40	2.50	2.50	104	4.09	114	4.49	51	2.000	89	3.500	50	1.97	25	.98	76	2.995	64	2.502	2 1/2-8		13	.531	1/2-13		232	1/2-13X1.75
SP43-48-48	SP104-48-48	3.00	3.00	124	4.88	134	5.28	62	2.438	106	4.188	50	1.97	27	1.06	92	3.615	76	3.002	3-8		17	.656	5/8-11		237	5/8-11X2.00

### Code 61 SAE Straight Thread

Part No. O-Ring Fig. A	Part No. Flat Face Fig. B	Port Size	Pad Size	A		B		C		D		E		F		G		H		J UN/UNF-2B		K		L UNC-2B		Mounting Hardware	
				mm	in	mm	in	mm	in	mm	in	mm	in	mm	in	mm	in	mm	in	mm	in	mm	in	mm	in	mm	in
SP46-8-8	SP106-8-8	.50	.50	46	1.81	54	2.13	17	.688	38	1.500	36	1.42	16	.63	25	1.000	13	.502	3/4-16		9	.344	5/16-18		210	5/16-18X1.25
SP46-12-12	SP106-12-12	.75	.75	50	1.97	65	2.56	22	.875	48	1.875	36	1.42	18	.71	32	1.250	19	.752	1 1/16-12		10	.406	3/8-16		214	3/8-16X1.50
SP46-16-16	SP106-16-16	1.00	1.00	55	2.17	70	2.75	26	1.031	52	2.062	38	1.50	18	.71	40	1.560	25	1.002	1 1/16-12		10	.406	3/8-16		219	3/8-16X1.50
SP46-20-20	SP106-20-20	1.25	1.25	68	2.68	79	3.12	30	1.188	59	2.312	41	1.61	21	.83	44	1.750	32	1.252	1 1/8-12		12	.469	7/16-14		222	7/16-14X1.75
SP46-24-24	SP106-24-24	1.50	1.50	78	3.07	93	3.66	36	1.406	70	2.750	45	1.77	25	.98	54	2.115	38	1.502	1 1/8-12		13	.531	1/2-13		225	1/2-13X1.75
SP46-32-32	SP106-32-32	2.00	2.00	90	3.54	102	4.00	43	1.688	78	3.062	45	1.77	25	.98	63	2.490	51	2.002	2 1/2-12		13	.531	1/2-13		228	1/2-13X1.75