

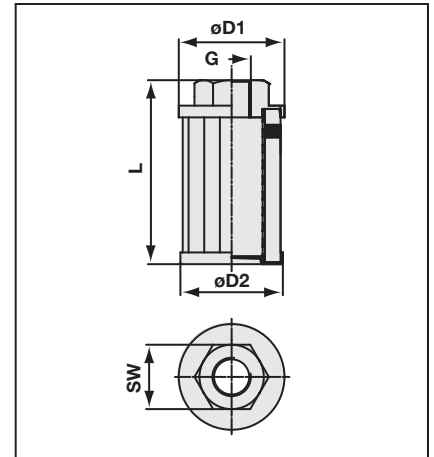
Specifications

- Stainless Steel Mesh 125µ—100 Mesh
- Temperature to 250°F (+120°C)
- Epoxy Bonded for Compatibility with most Petroleum & Mineral Based Fluids.
- Plastic Threaded End Cap made out of Glass Fiber Reinforced Polyamide. Other Components Steel Zinc Plated



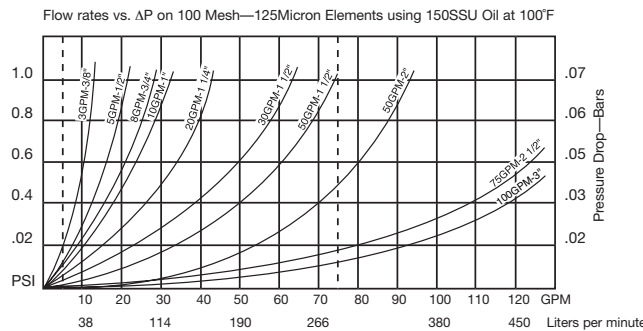
Technical Information

Dimensions

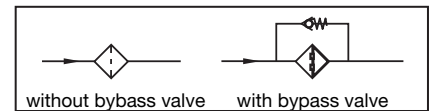


Options

- No By-pass or 3 PSI By-pass Available
- Custom Sizes on Request
- Custom Stainless Mesh on Request (60µ, on 250µ)
- Available in BSP on Request



Hydraulic Symbol



Dimensions / Ordering Information

| Group Size | | | Port (G) | | | | | | Diameter | | | | | | | |
|--------------------|-------------|----------------|----------|-----|-------|-----------------|-----------------|-----|----------|-----|-----|-----|-----|----|-----|-----------|
| Upper End Diameter | Thread Code | Element Length | (NPT) | gpm | l/min | in ² | cm ² | mm | in | mm | in | mm | in | mm | in | Wt. (lb.) |
| 050 | - N06F | - 090 | 3/8" | 3 | 11 | 20 | 130 | 90 | 3.5 | 50 | 1.9 | 49 | 1.9 | 26 | 1.0 | 0.3 |
| 050 | - N08F | - 105 | 1/2" | 5 | 19 | 25 | 161 | 105 | 4.1 | 50 | 1.9 | 49 | 1.9 | 26 | 1.0 | 0.4 |
| 068 | - N12F | - 105 | 3/4" | 8 | 31 | 62 | 400 | 105 | 4.3 | 68 | 2.6 | 66 | 2.6 | 34 | 1.3 | 0.5 |
| 068 | - N16F | - 140 | 1" | 10 | 38 | 110 | 710 | 140 | 5.5 | 68 | 2.6 | 66 | 2.6 | 42 | 1.7 | 0.7 |
| 088 | - N20F | - 140 | 1 1/4" | 20 | 88 | 105 | 1050 | 140 | 5.5 | 88 | 3.5 | 85 | 3.3 | 60 | 2.4 | 1.0 |
| 088 | - N24F | - 140 | 1 1/2" | 30 | 120 | 225 | 1450 | 140 | 5.5 | 88 | 3.5 | 85 | 3.3 | 60 | 2.4 | 1.2 |
| 102 | - N24F | - 200 | 1 1/2" | 50 | 198 | 340 | 2190 | 200 | 7.9 | 102 | 3.9 | 100 | 3.9 | 72 | 2.8 | 1.4 |
| 102 | - N32F | - 260 | 2" | 50 | 198 | 340 | 2190 | 260 | 10.2 | 102 | 3.9 | 100 | 3.9 | 72 | 2.8 | 1.8 |
| 131 | - N40F | - 212 | 2 1/2" | 75 | 283 | 400 | 2580 | 212 | 8.4 | 131 | 5.1 | 128 | 5.0 | 86 | 3.4 | 2.3 |
| 131 | - N48F | - 272 | 3" | 100 | 379 | 500 | 3230 | 272 | 10.7 | 131 | 5.1 | 128 | 5.0 | 96 | 3.8 | 3.0 |

Ordering Code

SUS - P - 088 - N24F - 140 - 125 - 0

| Type | SUS Suction Strainer |
|------|----------------------|
|------|----------------------|

| Material Threaded End Cap | P Polyamide (only for NPT thread, see table) |
|---------------------------|--|
|---------------------------|--|

| Group Size | see table above, column group size |
|------------|------------------------------------|
|------------|------------------------------------|

| Bypass Option | 0 without bypass (standard) 3 integrated bypass valve (0,2 bar / 3 PSI) |
|---------------|--|
|---------------|--|

| Micron Rating | 060 60 µm (on request) 125 125 µm (standard) 250 250 µm (on request) |
|---------------|--|
|---------------|--|