



Port Flanges Type SP4, SP61, SP59, SP60, SP72, SP91

Specifications

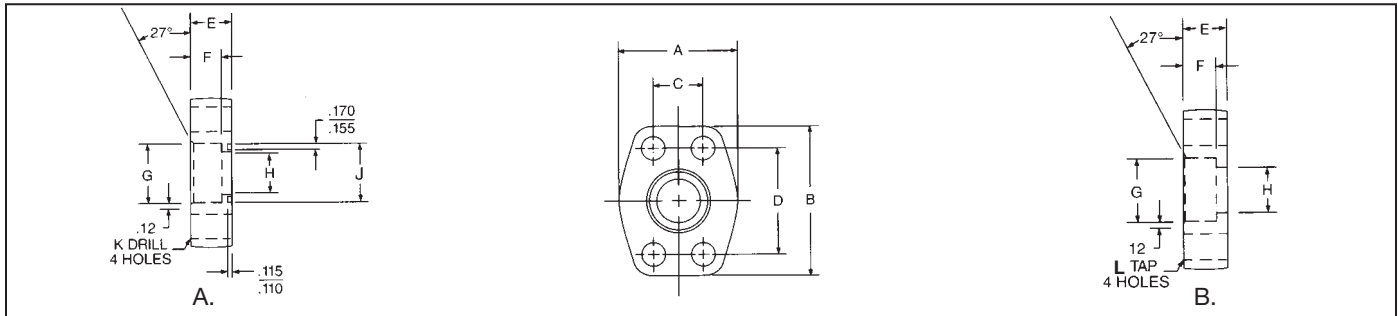
- Carbon Steel Forging
- For Socket-Pipe
- Sizes to 5" Pipe

Options

- 3000 PSI (200 Bar) SAE Code 61, or 6000 PSI (400 Bar) SAE Code 62 or 500 PSI (35 Bar)
- Standard and Companions Flanges



Dimensions / Ordering Information



Code 61 Flat Socket Weld - Pipe

Part No. O-Ring Fig. A	Part No. Flat Face Fig. B	Pipe Size	Pad Size	A		B		C		D		E		F		G		H		J		K		L UNC-2B		Mounting Hardware	
				mm	in	mm	in	mm	in	mm	in	mm	in	mm	in	mm	in	mm	in	mm	in	mm	in	mm	in	in	O-Ring
SP4-8-8	SP61-8-8	.50	.50	46	1.813	54	2.125	17	.688	38	1.500	19	.750	14	.560	25	1.000	13	.502	22	.855	9	.344	5/16-18	210	5/16-18X1.50	
SP4-12-12	SP61-12-12	.75	.75	52	2.063	65	2.563	22	.875	48	1.875	19	.750	14	.560	32	1.250	19	.752	27	1.062	10	.406	3/8-16	214	3/8-16X1.50	
SP4-16-16	SP61-16-16	1.00	1.00	59	2.313	70	2.750	26	1.031	52	2.063	22	.880	16	.630	40	1.560	25	1.002	34	1.328	10	.406	3/8-16	219	3/8-16X1.75	
SP4-20-20	SP61-20-20	1.25	1.25	73	2.875	79	3.125	30	1.188	59	2.313	24	.940	18	.690	44	1.750	32	1.252	42	1.672	12	.469	7/16-14	222	7/16-14X1.75	
SP4-24-24	SP61-24-24	1.50	1.50	83	3.250	94	3.688	38	1.406	70	2.750	30	1.190	19	.750	54	2.115	38	1.502	49	1.922	13	.531	1/2-13	225	1/2-13X2.25	
SP4-32-32	SP61-32-32	2.00	2.00	97	3.813	102	4.000	43	1.688	78	3.063	35	1.380	22	.875	63	2.490	50	2.002	61	2.406	13	.531	1/2-13	228	1/2-13X2.50	
SP4-40-40	SP61-40-40	2.50	2.50	109	4.281	114	4.500	51	2.000	89	3.500	44	1.750	25	1.000	76	2.995	64	2.502	74	2.906	13	.531	1/2-13	232	1/2-13X2.75	
SP4-48-48	SP61-48-48	3.00	3.00	131	5.156	135	5.313	62	2.438	106	4.188	54	2.120	32	1.250	92	3.615	76	3.002	90	3.547	17	.656	5/8-11	237	5/8-11X3.50	

Code 62 Flat Socket Weld - Pipe

Part No. O-Ring Fig. A	Part No. Flat Face Fig. B	Pipe Size	Pad Size	A		B		C		D		E		F		G		H		J		K		L UNC-2B		Mounting Hardware	
				mm	in	mm	in	mm	in	mm	in	mm	in	mm	in	mm	in	mm	in	mm	in	mm	in	mm	in	in	O-Ring
SP59-8-8	SP60-8-8	.50	.50	49	1.94	58	2.30	18	.718	40	1.594	32	1.250	14	.560	25	1.000	13	.502	22	.855	9	.344	5/16-18	210	5/16-18X2.00	
SP59-12-12	SP60-12-12	.75	.75	64	2.50	75	2.95	24	.937	51	2.000	32	1.250	14	.560	32	1.250	19	.752	27	1.062	10	.406	3/8-16	214	3/8-16X2.00	
SP59-16-16	SP60-16-16	1.00	1.00	70	2.75	81	3.19	28	1.093	64	2.250	38	1.500	16	.630	40	1.560	25	1.002	34	1.328	12	.492	7/16-14	219	7/16-14X2.50	
SP59-20-20	SP60-20-20	1.25	1.25	78	3.06	95	3.75	31	1.250	67	2.625	38	1.500	18	.690	44	1.750	32	1.252	42	1.672	13	.531	1/2-13	222	1/2-13X2.50	
SP59-24-24	SP60-24-24	1.50	1.50	95	3.75	113	4.44	36	1.437	79	3.125	44	1.750	19	.750	54	2.115	38	1.502	49	1.922	17	.656	5/8-11	225	5/8-11X3.00	
SP59-32-32	SP60-32-32	2.00	2.00	114	4.50	133	5.25	44	1.750	97	3.812	44	1.750	22	.875	63	2.490	50	2.002	61	2.406	20	.781	3/4-10	228	3/4-10X3.00	
SP59-40-40	SP60-40-40	2.50	2.50	149	5.87	174	6.87	59	2.312	124	4.875	52	2.060	25	1.000	76	2.995	64	2.502	74	2.906	23	.906	7/8-9	232	7/8-9X3.50	
SP59-48-48	SP60-48-48	3.00	3.00	178	7.00	216	8.50	71	2.812	152	6.000	67	2.620	32	1.250	92	3.615	76	3.002	90	3.547	30	1.190	1 1/4-7	237	1 1/4-7X4.50	

500 PSI Flat Socket Weld - Pipe

Part No. O-Ring Fig. A	Part No. Flat Face Fig. B	Pipe Size	Pad Size	A		B		C		D		E		F		G		H		J		K		L UNC-2B		Mounting Hardware	
				mm	in	mm	in	mm	in	mm	in	mm	in	mm	in	mm	in	mm	in	mm	in	mm	in	mm	in	in	O-Ring
SP72-48-48	SP91-48-48	3.00	3.00	130	5.12	135	5.31	62	2.438	106	4.188	35	1.380	28	1.120	92	3.615	76	3.002	90	3.547	17	.656	5/8-11	237	5/8-11X3.00	
SP72-56-56	SP91-56-56	3.50	3.50	140	5.50	152	6.00	70	2.750	121	4.750	37	1.440	30	1.190	104	4.095	89	3.502	103	4.047	17	.656	5/8-11	241	5/8-11X3.00	
SP72-64-64	SP91-64-64	4.00	4.00	152	6.00	162	6.38	78	3.062	130	5.125	38	1.500	32	1.250	117	4.595	102	4.002	116	4.578	17	.656	5/8-11	245	5/8-11X3.00	
SP72-80-80	SP91-80-80	5.00	5.00	181	7.12	184	7.25	92	3.625	152	6.000	44	1.750	35	1.380	142	5.595	127	5.002	143	5.641	17	.656	5/8-11	253	5/8-11X3.00	