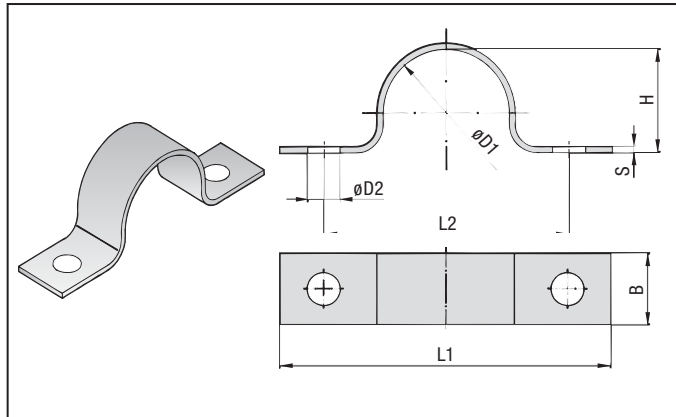
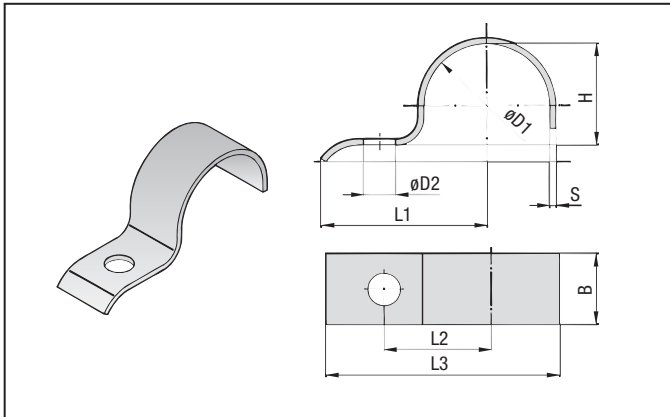


according to DIN 1592

according to DIN 1593



STAUFF Group Ø D1	Dia. Range		L1		L2		L3		H		D2		B		S	
	mm	in	mm	in	mm	in	mm	in	mm	in	mm	in	mm	in	mm	in
7	5.5-7	0.22-0.28	22	0.87	14	0.55	27.5	1.08	5	0.20	6.6	16	0.63	2		
9	7-9	0.28-0.35	27	1.06	18	0.71	33.5	1.32	6	0.24	0.26	20	0.79	0.08		
13	9.5-13	0.37-0.51	40	1.57	25	0.98	49.5	1.95	9	0.35	11	25		3		
15,5	13-15.5	0.51-0.61	41	1.61	26	1.02	52	2.05	12	0.47						
19	15.5-19	0.61-0.75	43	1.69	28	1.10	55.5	2.19	15	0.59	0.43	0.98		0.12		
23	20-23	0.79-0.91	51	2.01	35	1.38	67	2.64	19	0.75	14	30		5		
26	23-26	0.91-1.02	52	2.05	36	1.42	70	2.76	22	0.87						
28,5	26-28.5	1.02-1.12	53	2.09	37	1.46	73	2.87	24	0.94						
31	28.5-31	1.12-1.22	55	2.17	39	1.54	75.5	2.97	27	1.06		1.18				
36	33-36	1.30-1.42	57	2.24	41	1.61	81	3.19	32	1.26		40				
39	36-39	1.42-1.54	59	2.32	43	1.69	83.5	3.29	34	1.34	0.55					
43	39-43	1.54-1.69	68	2.68	48	1.89	94.5	3.72	38	1.50	18					
46	43-46	1.69-1.81	70	2.76	50	1.97	98	3.86	41	1.61					0.20	
49	46-49	1.81-1.93	73	2.87	53	2.09	105.5	4.15	44	1.73					8	
52*	49-52	1.93-2.05	76	2.99	56	2.20	110	4.33	47	1.85						
58	53-58	2.09-2.28	78	3.07	58	2.28	115	4.53	52	2.05						
61	58-61	2.28-2.40	80	3.15	60	2.36	118.5	4.67	57	2.24	0.71	1.57		0.31		

* similar to DIN 1592

STAUFF Group Ø D1	Dia. Range		L1		L2		H		D2		B		S			
	mm	in	mm	in	mm	in	mm	in	mm	in	mm	in	mm	in		
7	5.5-7	0.22-0.28	44	1.73	28	1.10	5	0.20	6.6	16	0.63	2				
9	7-9	0.28-0.35	48	1.89	32	1.26	6	0.24			20					
13	9.5-13	0.37-0.51	52	2.05	36	1.42	9	0.35								
15,5	13-15.5	0.51-0.61	56	2.20	40	1.57	12	0.47								
19	15.5-19	0.61-0.75	60	2.36	44	1.73	15	0.59	0.26	0.79		0.08				
23	20-23	0.79-0.91	82	3.23	56	2.20	19	0.75	11	25		3				
26	23-26	0.91-1.02	84	3.31	58	2.28	22	0.87								
28,5	26-28.5	1.02-1.12	90	3.54	64	2.52	24	0.94								
31	28.5-31	1.12-1.22	106	4.17	80	3.15	32	1.26								
36	33-36	1.30-1.42	110	4.33	84	3.31	34	1.34								
39	36-39	1.42-1.54	120	4.72	88	3.46	38	1.50	0.43							
43	39-43	1.54-1.69	122	4.80	90	3.54	41	1.61	14	30		5				
46	43-46	1.69-1.81	142	5.59	110	4.33	52	2.05								
49	46-49	1.81-1.93	152	5.98	120	4.72	66	2.60								
58	53-58	2.09-2.28	176	6.93	136	5.35	72	2.83								
61	58-61	2.28-2.40	184	7.24	144	5.67	76	2.99								
71	67-71	2.64-2.80	198	7.80	158	6.22	85	3.35	0.55							
77	73-77	2.87-3.03	214	8.43	174	6.85	98	3.86								
81	77-81	3.03-3.19	220	8.66	180	7.09	104	4.09								
91	86-91	3.39-3.58	226	8.90	186	7.32	109	4.29								
103	99-103	3.90-4.06														
109	105-109	4.13-4.29														
115	110-115	4.33-4.53														

ORDER CODE

DIN 1592-***



MATERIAL AND SURFACE FINISHING

STAUFF Group 7 – 49 **W3** carbon steel St 37, zinc plated (Fe/Zn 8 C)
 STAUFF Group 52 – 61 **W1** carbon steel St 37, untreated (Surface finishing on request only)

Other materials, surface finishings and diameters upon request.

ORDER CODE

DIN 1593-***



MATERIAL AND SURFACE FINISHING

STAUFF Group 7 – 77 **W3** carbon steel St 37, zinc plated (Fe/Zn 8 C)
 STAUFF Group 81 – 115 **W1** carbon steel St 37, untreated (Surface finishing on request only)

Other materials, surface finishings and diameters upon request.

* Consult Factory for Availability