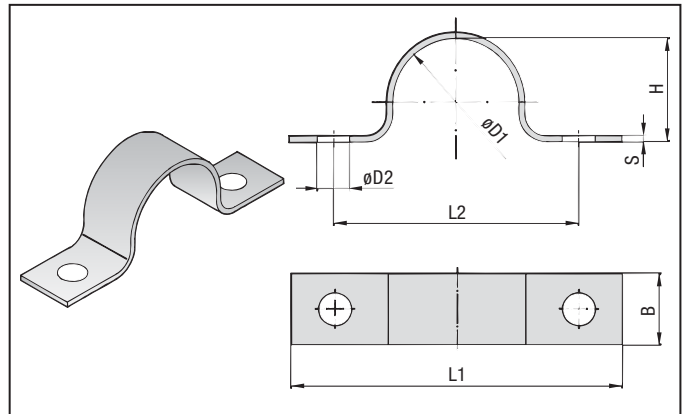
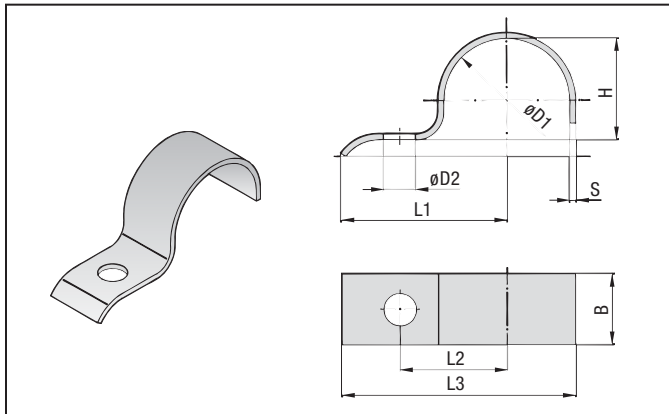


according to **DIN 1596**

according to **DIN 1597**



STAUFF Group Ø D1	Dia. Range		L1		L2		L3		H		D2		B		S	
	mm	in	mm	in	mm	in	mm	in	mm	in	mm	in	mm	in	mm	in
7	5.5-7	0.22-0.28	26	1.02	14	0.55	31.5	1.24	5	0.20	6,6	16	2			
9	7-9	0.28-0.35	28	1.10	16	0.63	34.5	1.36	6	0.24		0.63	0.08			
13	9.5-13	0.37-0.51	30	1.18	18	0.71	38.5	1.52	9	0.35		20	2			
15,5	13-15.5	0.51-0.61	32	1.26	20	0.79	41.75	1.64	12	0.47						
19	15.5-19	0.61-0.75	34	1.34	22	0.87	45.5	1.79	15	0.59	0.26	0.79	0.12			
23	20-23	0.79-0.91	43	1.69	28	1.10	57.5	2.26	19	0.75	9	25	3			
26	23-26	0.91-1.02	44	1.73	29	1.14	60	2.36	22	0.87						
28,5	26-28.5	1.02-1.12	47	1.85	32	1.26	64.25	2.53	24	0.94						
31	28.5-31	1.12-1.22	56	2.20	36	1.42	65.5	2.58	27	1.06						
33*	31-33	1.22-1.30	57	2.24	40	1.57	75.5	2.97	29	1.14	0.35	0.98				
36	33-36	1.30-1.42	59	2.32	42	1.65	81.5	3.21	34	1.34	11	30				
39	36-39	1.42-1.54	61	2.40	44	1.73	85.5	3.37	38	1.50						
43	39-43	1.54-1.69	62	2.44	45	1.77	88	3.46	41	1.61	0.43	1.18	0.20			
46	43-46	1.69-1.81	67	2.64	48	1.89	95.5	3.76	44	1.73						
49	46-49	1.81-1.93	72	2.83	53	2.09	102	4.02	47	1.85	14	40	4			
52*	49-52	1.93-2.05	74	2.91	55	2.17	107	4.21	52	2.05						
58	53-58	2.09-2.28	77	3.03	58	2.28	111.5	4.39	56	2.24	0.55	1.57	0.31			
61	58-61	2.28-2.40														

STAUFF Group Ø D1	Dia. Range		L1		L2		H		D2		B		S		
	mm	in	mm	in	mm	in	mm	in	mm	in	mm	in	mm	in	
7	5.5-7	0.22-0.28	44	1.73	28	1.10	5	0.20	5,5	16	1,5				
9	7-9	0.28-0.35	48	1.89	32	1.26	6	0.24							
13	9.5-13	0.37-0.51	52	2.05	36	1.42	9	0.35							
15,5	13-15.5	0.51-0.61	56	2.20	40	1.57	12	0.47							
19	15.5-19	0.61-0.75	60	2.36	44	1.73	15	0.59	0.22	0.63	0.06				
23	20-23	0.79-0.91	76	2.99	56	2.20	19	0.75	6,6	20	2				
26	23-26	0.91-1.02	78	3.07	58	2.28	22	0.87							
28,5	26-28.5	1.02-1.12	84	3.31	64	2.52	24	0.94							
31	28.5-31	1.12-1.22	92	3.62	72	2.83	29	1.14							
33*	31-33	1.22-1.30	104	4.09	80	3.15	32	1.26	0.26	0.79	0.08				
36	33-36	1.30-1.42	108	4.25	84	3.31	34	1.34	9	25	3				
39	36-39	1.42-1.54	112	4.41	88	3.46	38	1.50							
43	39-43	1.54-1.69	114	4.49	90	3.54	41	1.61							
46	43-46	1.69-1.81	118	4.65	94	3.70	44	1.73	0.35	0.98					
49	46-49	1.81-1.93	134	5.28	106	4.17	47	1.85	11	30					
52*	49-52	1.93-2.05	138	5.43	110	4.33	52	2.05							
58	53-58	2.09-2.28													
61	58-61	2.28-2.40							0.43	1.18	0.12				

* similar to DIN 1596

* similar to DIN 1597

ORDER CODE

DIN 1596 - ***



MATERIAL AND SURFACE FINISHING

STAUFF Group 7 – 61 **W3** carbon steel St37, zinc plated (Fe/Zn 8 C)

Other materials, surface finishings and diameters upon request.

ORDER CODE

DIN 1597 - ***



MATERIAL AND SURFACE FINISHING

STAUFF Group 7 – 61 **W3** carbon steel St37, zinc plated (Fe/Zn 8 C)

Other materials, surface finishings and diameters upon request.

* Consult Factory for Availability