



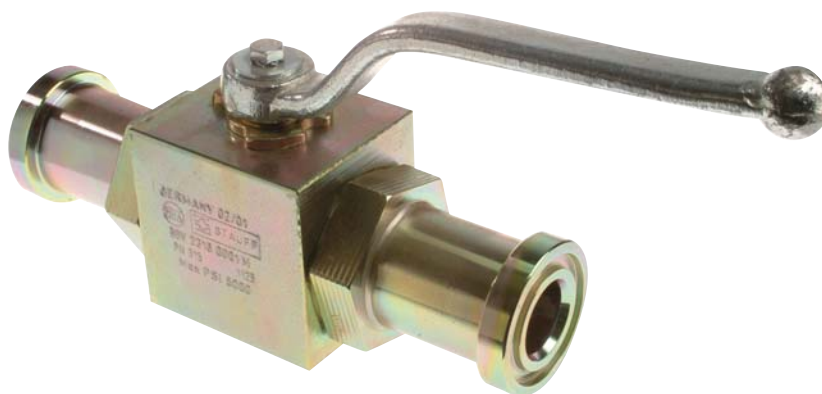
## Two-Way Valves BBV 22/23 Series - SAE Split Flange

### Specifications

- 1/2", 3/4" & 1" Block Body Style
- SAE Code 61 & 62 (SAE Standard J518)
- Split Flange Connectors
- Delrin +MoS2 Ball Seats
- Viton O-Rings
- Carbon Steel Construction Standard;
- Temperature Range: -14°F to 212°F (-10°C to 100°C)
- Zinc Plated Body

### Options

- Split Flange Kits Available  
SF Series for Both Code 61 & Code 62 (see page A39)
- Stainless Steel
- Locking Kits
- Limit Switches
- Actuator Packages Available
- Straight Handles
- Special Seat and "O"-Ring Materials Available for Higher Temperatures or Aggressive Media



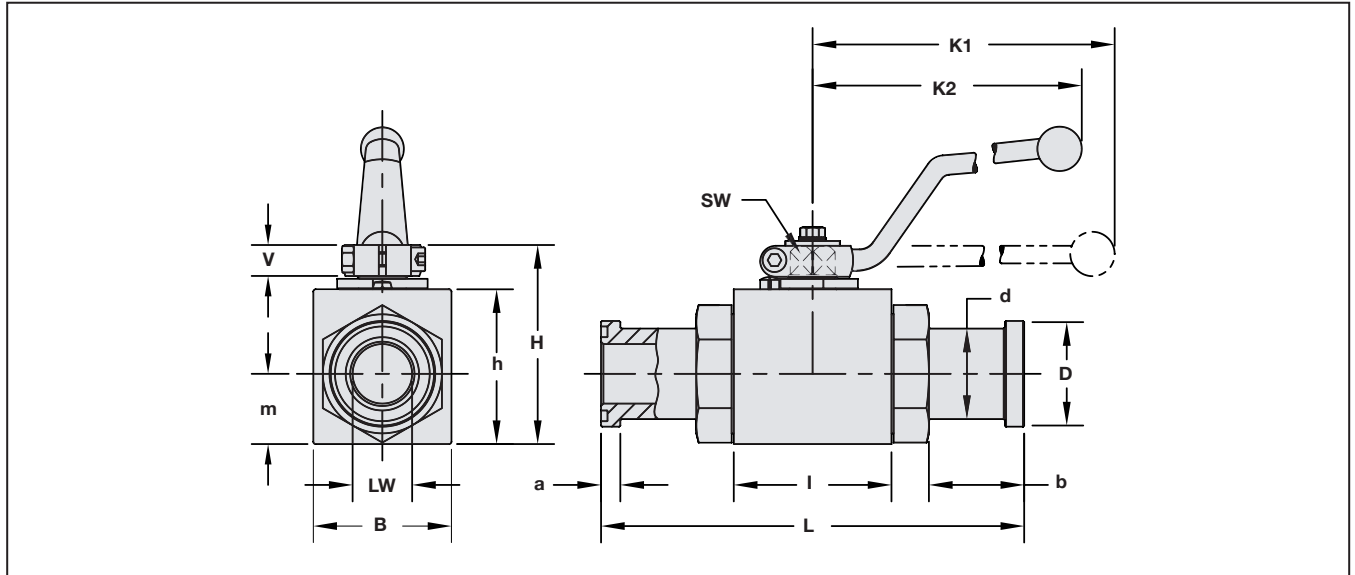
### Technical Information

Item Number	Quantity	Description
1	1	Housing
2	1	Ball
3*	2	Seat
4*	2	Connector O-Ring
5	2	Connector
6	1	Stop Pin
7	1	Stem
8*	1	Thrust Ring
9*	1	Stem O-Ring
10	1	Cam Plate
11	1	Snap Ring
12	1	Handle
13	1	Stem Screw
14	1	Flow Indicator

\*Included in Seal Kit

Size	Code	Part Number Without Flanges	Part Number With Flanges	Maximum Working Pressure	
				PSI	Bar
1/2"	CODE 61	BBV22080001M	BBV22080001M/SF	5000	345
	CODE 62	BBV23080001M	BBV23080001M/SF	6000	420
3/4"	CODE 61	BBV22120001M	BBV22120001M/SF	5000	345
	CODE 62	BBV23120001M	BBV23120001M/SF	5000	345
1"	CODE 61	BBV22160001M	BBV22160001M/SF	5000	345
	CODE 62	BBV23160001M	BBV23160001M/SF	5000	345

## Dimensional Information



### Code 61

Size	LW	L	I	B	H	h	m	V	SW	K1	K2	D	d	a	b	Weight	
	in mm	in mm	in mm	in mm	in mm	in mm	in mm	in mm	in mm	in mm	in mm	in mm	in mm	in mm	in mm	in mm	lbs kg
1/2"	0.51 12.95	5.94 150.88	1.89 48.01	1.38 35.05	2.13 54.10	1.57 39.88	0.75 19.05	0.43 10.92	0.35 9	5.91 150.11	4.53 115.06	1.19 30.23	0.94 23.88	0.27 6.86	1.73 43.94	2.0 0.91	
3/4"	0.75 19.05	6.38 162.05	2.44 61.98	1.93 49.02	2.95 74.93	2.24 56.90	0.96 24.38	0.55 13.97	0.55 14	7.87 199.90	6.30 160.02	1.50 38.10	1.25 31.75	0.27 6.86	1.67 42.82	3.5 1.59	
1"	0.98 24.89	7.01 178.05	2.60 66.04	2.28 57.91	3.27 83.06	2.56 65.02	1.16 29.46	0.55 13.97	0.55 14	7.87 199.90	6.30 160.02	1.75 44.45	1.50 38.10	0.32 8.13	1.57 39.88	5.0 2.27	

### Code 62

Size	LW	L	I	B	H	h	m	V	SW	K1	K2	D	d	a	b	Weight	
	in mm	in mm	in mm	in mm	in mm	in mm	in mm	in mm	in mm	in mm	in mm	in mm	in mm	in mm	in mm	in mm	lbs kg
1/2"	0.51 12.95	5.94 150.88	1.89 48.01	1.38 35.05	2.13 54.10	1.57 39.88	0.75 19.05	0.43 10.92	0.35 9	5.91 150.11	4.53 115.06	1.25 31.75	0.94 23.88	0.31 7.87	1.57 39.88	2.0 0.91	
3/4"	0.75 19.05	6.85 162.05	2.44 61.98	1.93 49.02	2.95 74.93	2.24 56.90	0.96 24.38	0.55 13.97	0.55 14	7.87 199.90	6.30 160.02	1.63 41.40	1.25 31.75	0.35 8.89	1.85 46.99	3.5 1.59	
1"	0.87 24.89	7.80 178.05	2.60 66.04	2.28 57.91	3.27 83.06	2.56 65.02	1.16 29.46	0.55 13.97	0.55 14	7.87 199.90	6.30 160.02	1.87 47.50	1.50 38.10	0.38 9.65	1.97 50.04	5.0 2.27	

## Ordering Information

